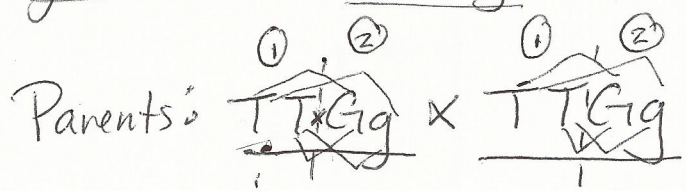


1) A tall green plant (TTGg) crossed with a tall green plant (TTGg)



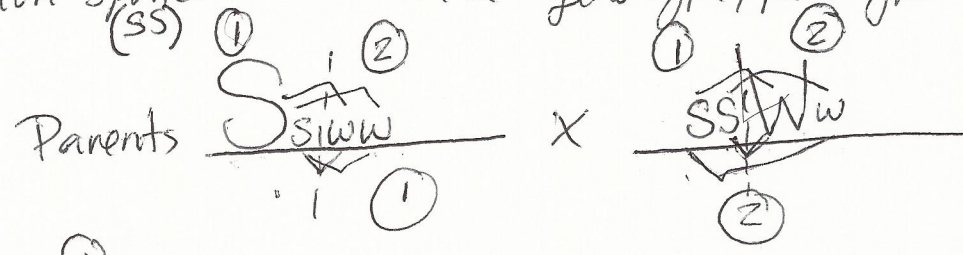
FOIL ast
i v h n e r
s + t
+ ↓

	TG	Tg	TG	Tg
TG	TTGG	TTGg	TtGG	TtGg
Tg	TtGg	TTgg	TtGg	Ttgg
TG	TTGG	TTGg	TtGG	TtGg
Tg	TtGg	TTgg	TtGg	Ttgg

Tall - Dominant - T
Green - Dominant - G
short - recessive - tt
white - recessive - gg

12 Tall/Green, 4 Tall white, 0 short/green, 0 short white

In man, assume that spotted skin (S) is dominant over non-spotted skin (s) and that woolly hair (W) is dominant over non-woolly hair (w). Cross a marriage between a heterozygous spotted, non-woolly man with a heterozygous woolly haired, non-spotted woman. Give genotype, phenotype of offspring (in Ratio).



FOIL ast
I B T
I T E R
N E R

	Sw	Sw	sW	sw
sW	SsWw	SsWw	ssWw	ssWw
sw	Ssww	Ssww	ssww	ssww
sW	SsWw	SsWw	ssWw	ssWw
sw	Ssww	Ssww	ssww	ssww

ssWw	4
SsWw	4
SSWw	0
ssWw	4
Ssww	4

4 spotted skin/woolly hair, 4 spotted skin/non-woolly, 4 non-spotted/woolly hair, 4 non-spotted non-woolly